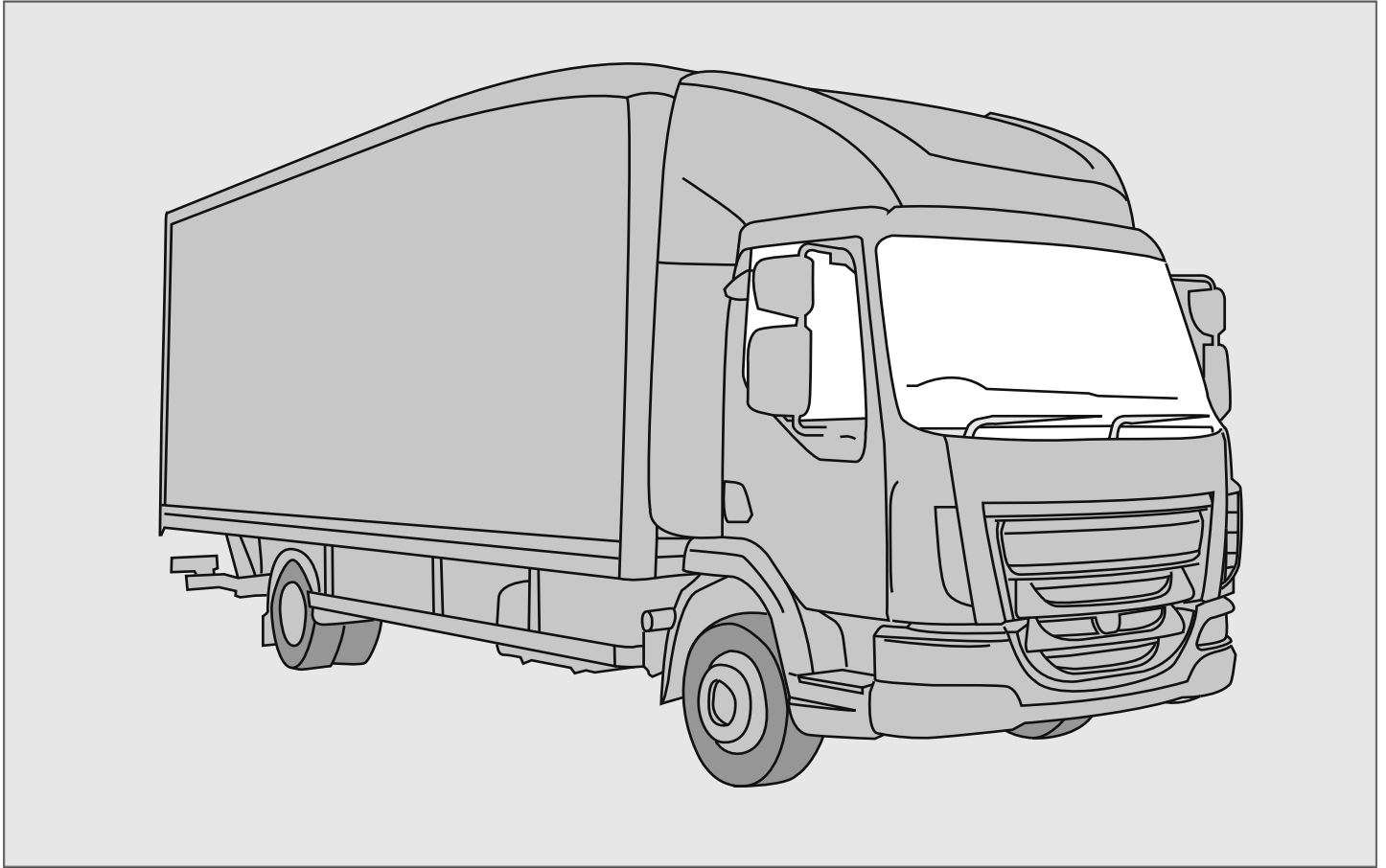


**Contents**

<b>ENGLISH</b> .....	2
Vehicle Details.....	2
Kit Details .....	2
Recommended Compressors .....	3
Installation Precautions .....	4
Parts View .....	5
Pre Installation .....	6
Installation .....	6
Compressor Installation .....	7
Drive Belt.....	7



## VEHICLE DETAILS

Manufacturer	DAF
Model	LF220 / LF250 / LF280 / LF310 CF220 / CF250 / CF280 / CF310
Engine	6.7 L PX-7 PACCAR
Engine Details	LF - 164 / 186 / 208 / 231 kW CF - 164 / 186 / 208 / 231 kW
Year	01.14 >
Chassis Nos.	OL543200>
LHD	YES
RHD	YES
PAS	YES
A/C	NO
Voltage	24V

## KIT DETAILS

Kit Part No.	0500.7332
Description	Standard Kit
Compressor RPM	3280
Fitting Time	30 Minutes
Suction Fitting	90°
Discharge Fitting	90°
Belt Type	8PK 1920
Belt Part No.	0820.5361

## RECOMMENDED COMPRESSORS

SELTEC	TM-21-HS	-	-
Comp No.	0381.5372	-	-
Seltec No.	-	-	-
Mounting	Direct	-	-
Rotor	8PV	-	-
GL	61.5mm	-	-
Armature	3E	-	-
Diameter	127	-	-
Voltage	24	-	-
Orientation	-	-	-
Fitting	Pad	-	-
Manifold	Bolt	-	-

QUE	QP21-HD	-	-
Comp No.	0391.5372	-	-
Que No.	QP21-1704	-	-
Mounting	Direct	-	-
Rotor	8PV	-	-
GL	61.5mm	-	-
Armature	3E	-	-
Diameter	127	-	-
Voltage	24	-	-
Orientation	-	-	-
Fitting	Pad	-	-
Manifold	Bolt	-	-

SANDEN	SD5H09	SD5H14	SD7H15
Comp No	-	-	-
Sanden No.	-	-	-
Mounting	-	-	-
Rotor	-	-	-
Armature	-	-	-
Diameter	-	-	-
Voltage	-	-	-
Orientation	-	-	-
Fitting	-	-	-

Notes

## COMPRESSOR KIT CONFIGURATIONS

PART NUMBER	COMPRESSOR KIT PART NOS		DESCRIPTION	QTY.
	0521.7332	0591.7332		
0381.5372	●		TM21 Direct Mount 8PV 3E 127 24V Pad Bolt	1
0391.5372		●	QP21 Direct Mount 8PV 3E 127 24V Pad Bolt	1

● = Additional parts to standard kits.

## FOREWORD

- The purpose of this manual is to facilitate the installation of a direct drive compressor. The information given is merely instructive, should any complications arise contact the Technical department. The manufacturer's warranty does not cover any problems caused by defective installation or alterations made unless authorised. The manufacturer shall not be responsible for any injury, damage or loss caused directly or indirectly as a result of using this manual or the information contained within it.

### 1 SAFETY MEASURES:

**Before fitting the Compressor adapter drive kit, ensure the following for damage:**

- Inner and outer trim and body work
- Engine idle pace
- Check all the vehicle functions

**Check list:**

- Ensure that the right kit has been selected
- Before installing, check that all the correct pieces are present; also ensure that there are no missing or broken pieces
- When fitting, make sure the vehicle is properly protected against damage.

### Installation apparatus

- Calibrated torque wrench
- Hand service tools
- Protective covers and shields

### 2 PRECAUTIONS

- Detach the battery negative lead.
- Torque all bolts where stated using a calibrated torque wrench.
- Take extreme care with moving parts.
- Remove the vehicles ignition key and keep it with you.
- Wear safeguards to make sure that liquid refrigerant never touches your skin



**Caution:** Measures must be followed accurately to steer clear of the possibility of damage to individuals

**Warning:** This calls awareness to actions which must be pursued to avoid damage to the components.

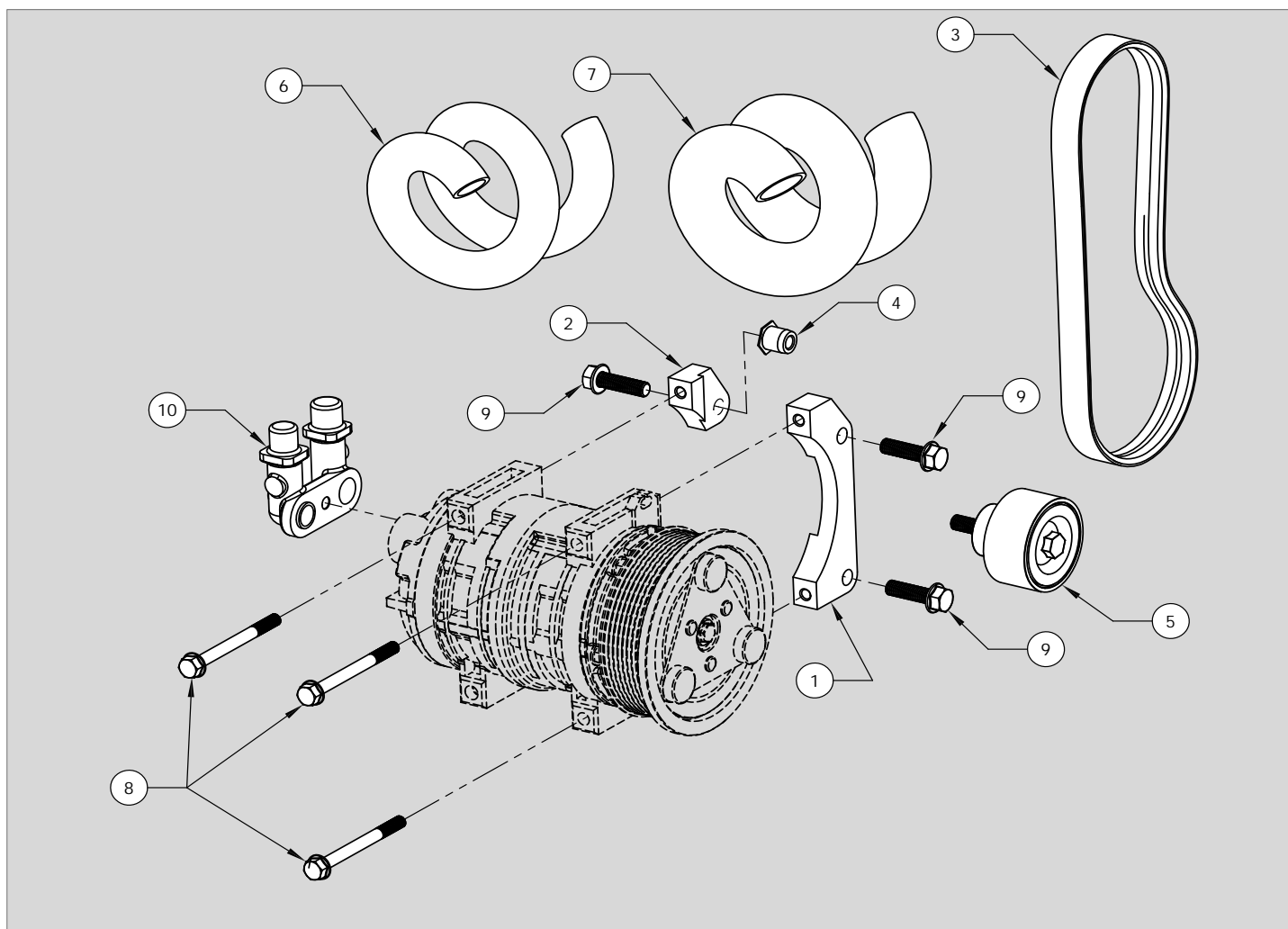
**NB:** This calls awareness to make the job easier or gives useful information.

## STANDARD FASTENER TORQUE VALUES

- In the absence of specific torque values detailed in this fitting instruction manual, the following chart can be used as a guide to the maximum safe torque for specific size and grade of fastener.

STRENGTH								
	Max Torque		Max Torque		Max Torque		Max Torque	
Dia / Pitch	lb.ft	Nm	lb.ft	Nm	lb.ft	Nm	lb.ft	Nm
M5 x 0.80	2	3	4.5	6	6.5	9	7.5	10
M6 x 1.00	4	5.5	7.5	10	11	15	13	18
M8 x 1.25	10	13	18	25	26	35	33	45
M10 x 1.25	20	27	39	53	57	78	66	90
M10 x 1.50	18	25	37	50	55	73	63	86
M12 x 1.75	33	45	63	85	97	130	111	150
M14 x 2.00	55	75	103	140	151	205	177	240
M16 x 2.00	85	115	159	215	232	315	273	370

## PARTS VIEW



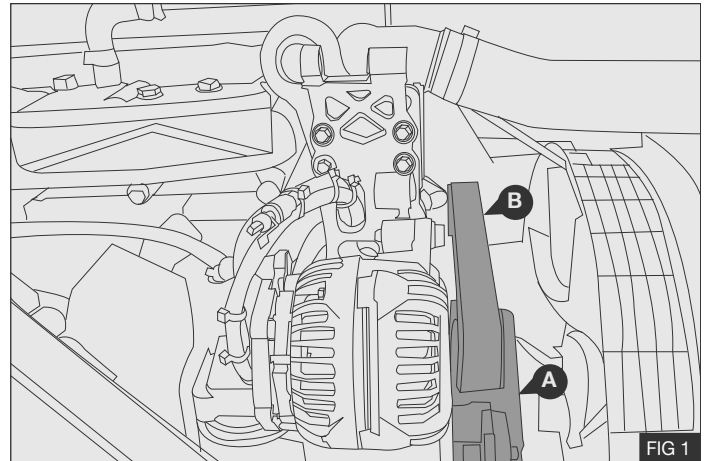
ITEM	PART NO.	DESCRIPTION	QTY.	COMMENTS
1	3020.6001	DAF LF PX-5/7 E6 Front Support Plate	1	-
2	3020.6011	DAF LF PX-5/7 E6 Rear Support Plate	1	-
3	0820.5361	Belt - Poly Groove 8PK 1920	1	-
4	1710.5143	Compressor Spacer M10 Thread 16 OD	1	-
5	1700.5011	Idle Pulley - 65 x 32 x 57 Includes bolt	1	-
6	1430.0142	Heat Shield Sleeve ID20, L0.5	1	-
7	1430.0162	Heat Shield Sleeve ID30, L 0.5	1	-
8	2704.5381	Hex flange bolt - M8 x 90 : 1.25 - 8.8	3	-
9	2705.0241	Hex flange bolt Durlok - M10 x 35 : 1.50 - 12.9	3	-
10	0425.0261	Manifold V - 3/4 x 7/8	1	-

## PRE-INSTALLATION

**N.B** Prior to commencing work, please examine the instructions with care. The alphabetical symbols on the diagram relate to written instructions, numerical symbols relate to the parts listing.

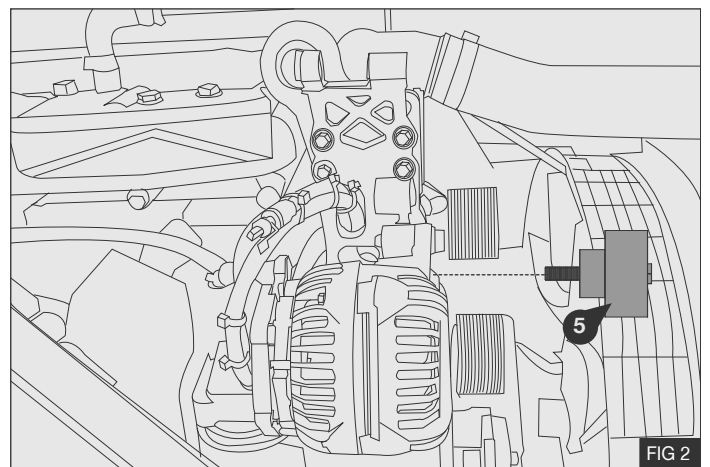
### Remove the following parts:

1. Using a suitable tool rotate the automatic belt tensioner pulley (A) anti clockwise - Fig.1
2. Release the belt tension (A) and remove and discard the original drive belt (B) - Fig1.



## INSTALLATION

1. Fit supplied idle pulley assembly (5) into position shown - Fig 2
2. Torque idle pulley bolt to 42 Nm / 31 lbf - Fig 2

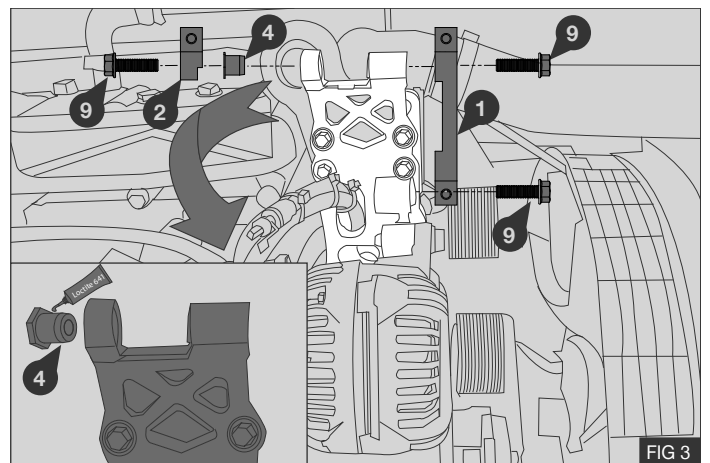


1. Fit the supplied insert (4) into the original manufacturer's compressor bracket boss as shown - Fig 3

**Note:** Add Loctite 641 shaft lock compound to the insert (4) before installing into the compressor boss as shown - Fig 3

2. Fit the front support plate (1) and rear support plate (2) securing with M10 x 35 bolts (9) - Fig 3

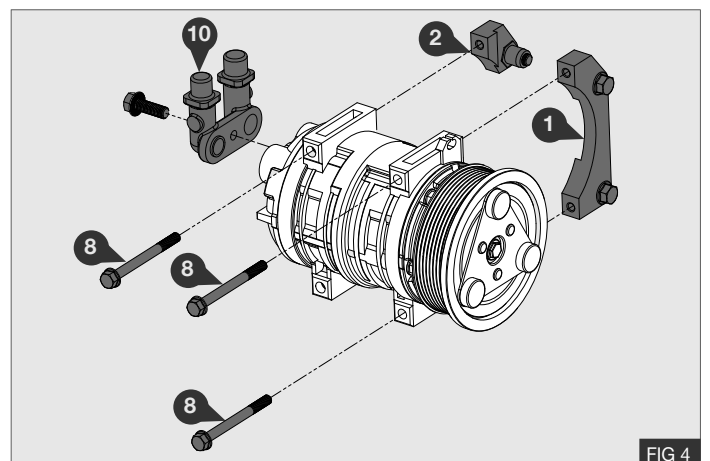
**Note:** Do not fully tighten the bolts (9) at this stage.



3. Install the compressor manifold (10) to the compressor (not supplied) - Fig 4
4. Install the compressor assembly onto the support plates (1) and (2) using M8 x 90 bolts (8) - Fig 4

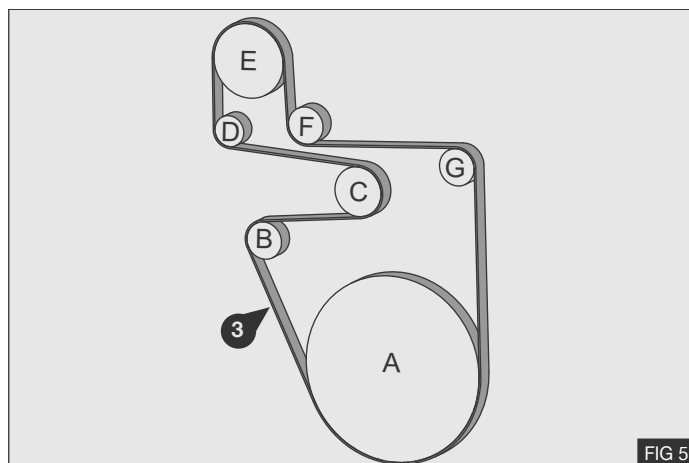
Torque bolts (9) to 50Nm / 37Lbft

Torque bolts (8) to 25Nm / 18Lbft



## DRIVE BELT

- Fit the supplied poly groove drive belt ③ to the configuration shown - Fig 5
  - Crank Pulley
  - Tensioner
  - Water Pump
  - Alternator
  - Compressor
  - Idle Pulley
  - Idle Pulley



## COMPRESSOR HOSES

- Apply the supplied heat shield tubes ⑥ and ⑦ to the refrigerant hoses (not supplied). Route hose in a direction to obtain optimum clearance to cabin underside

**Caution:** Do not route hoses too close to extreme heat sources.

## POST INSTALLATION

- Before starting the engine check all the installed parts and ensure that the belt is installed correctly. Run the unit for at least ten minutes, then check the whole mounting assembly and previously removed parts. Attach the supplied warning label on to a suitable location.

**Note**